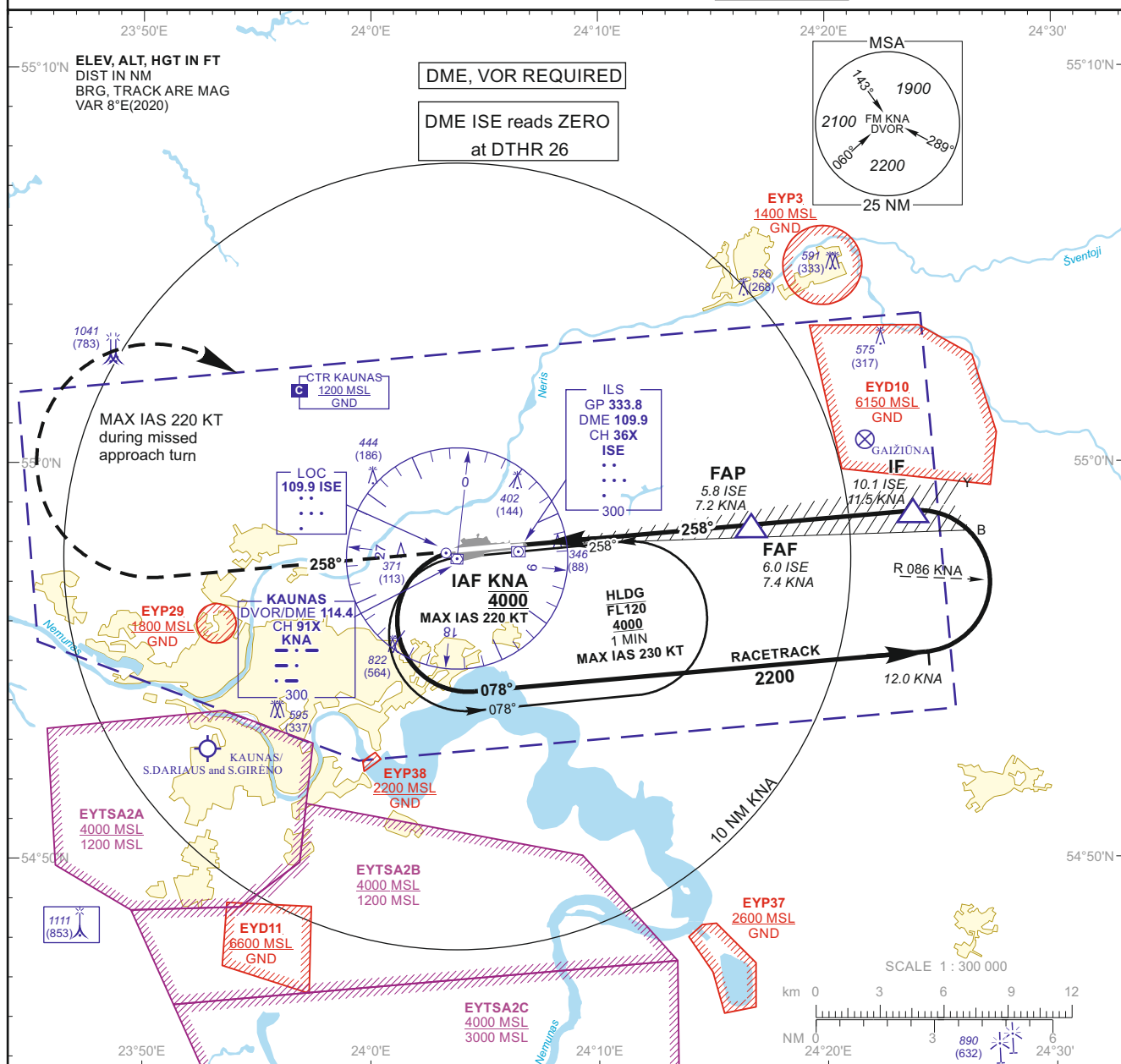
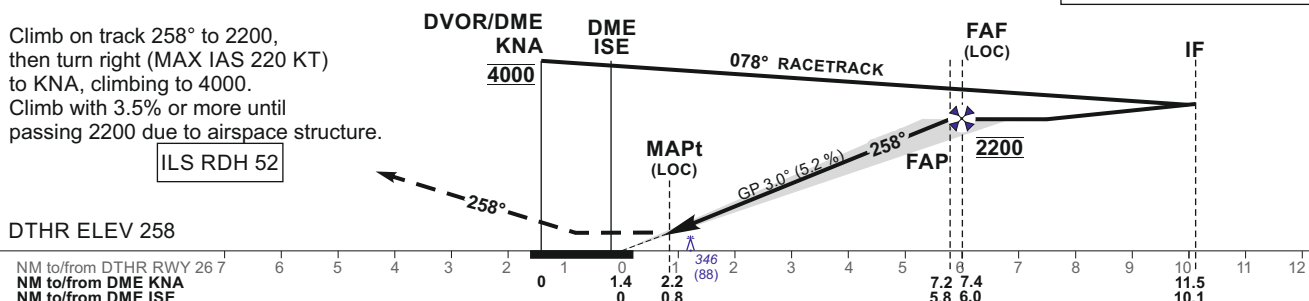


**KAUNAS
ILS CAT II Y or LOC
RWY 26 (CAT A/B/C/D)**



TRANSITION ALT 5000

ILS RDH 52



NM to/from DME ISE		0 0.6 3.6 6.0 10.1											
OCA(OCH)		A	B	C	D	DIST DME ISE	5	4	3	2			
STRAIGHT-IN APPROACH	ILS CAT II	408 (150)	425 (167)	436 (178)	451 (193)	Altitude	1890	1580	1260	950			
	ILS CAT I	496 (238)	508 (250)	516 (258)	526 (268)	Height	(1632)	(1322)	(1002)	(692)			
	LOC	620 (360)				LOC : timing not authorized for defining the MAPt							
CIRCLING		710 (450)	760 (500)	1230 (970)	not authorized	GS	Kts	80	100	120	140	160	180
						FAP-MAPt 5.1 NM	min:sec	3:49	3:03	2:33	2:11	1:55	1:42
						Rate of descent (5.2%)	ft/min	415	520	625	730	835	940
						For data tabulation see verso							

For data tabulation see verso

INSTRUMENT
APPROACH
CHART - ICAO

AERODROME ELEV 259
HEIGHTS RELATED TO
DTHR RWY 26 - ELEV 258

TWR	124.205
	118.505
ATIS	129.055

KAUNAS
ILS CAT II Y or LOC
RWY 26 (CAT A/B/C/D)

TABULAR DESCRIPTION

ILS or LOC INSTRUMENT APPROACH from IAF(KNA)

FIX/POINTS	COORDINATES	FIX FORMATION
KNA (IAF)	54 57 37.4N 024 03 59.1E	
IF	54 58 44.2N 024 23 46.4E	11.46 NM KNA ; BRG 257.53° / 10.09 NM ISE
FAF	54 58 24.0N 024 16 41.1E	7.36 NM KNA ; BRG 257.53° / 5.99 NM ISE
FAP	54 58 23.3N 024 16 25.6E	7.21 NM KNA ; BRG 257.53° / 5.84 NM ISE
MAPt	54 57 57.9N 024 07 42.5E	2.17 NM KNA ; BRG 257.53° / 0.80 NM ISE
DTHR RWY 26	54 57 53.79N 024 06 19.46E	
DME ISE	54 57 49.0N 024 06 00.1E	
LOC ISE	54 57 44.97N 024 03 21.54E	
Final approach (LOC) descent angle: 3.00°		

Changes: new chart.